



SportsArt

PERFORMANCE SERIES STRENGTH
SELECTORIZED | DUAL FUNCTION



SportsArt

Taiwan Headquarters
SPORTS ART INDUSTRIAL CO., LTD.
No. 11, Gong Huan Road, Tainan City,
70955 Taiwan
T: +886 6 3840 888
F: +886 6 3840 999
info@sportsart.com.tw

North & Latin America
8217, 44th Ave W Suite A,
Mukilteo, WA 98275, USA
T: +1 425 4819479
F: +1 425 4888155
info@gosportsart.com

Europe, Middle East & Africa
Via Risera 14,
CH-6556 Leggia,
Switzerland
T: +41 91 8273908
F: +41 91 8273910
info.emea@gosportsart.com

CHINA (Beijing)
T: +86 10 87108421 (sales)
T: +86 10 87103421 (service)
info@sportsart.com.cn

SportsArt

SportsArt

P800

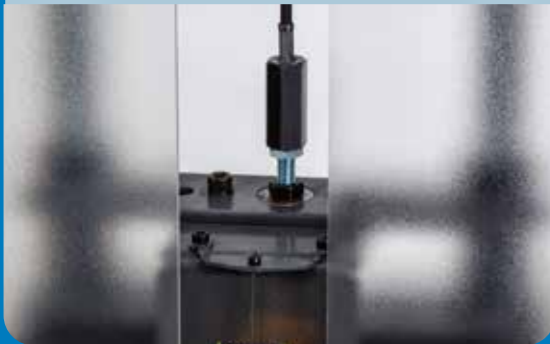
**SelectORIZED
STRENGTH
PERFORMANCE
LINE**

UPPER BODY

Low profile weight stack tower with front and back protective shrouds maintain a clean, consistent design aesthetic and protect users from moving parts, providing a practical safety aspect to any gym facility.



The micro cable adjustment feature eliminates the need to remove and retighten cables.



Magnetized weight selector instantly locks into place, providing an easy-to-use and secure operation. The unique fork style delivers more stability than selector pins, while the retracting cord eliminates clutter and keeps the selector within reach. Precision sound dampeners keep the stack motion as quiet as possible.



The range of movement adjustment ensures that the cam is synchronized with the user regardless of the starting position. Pivot point markers help the user position themselves properly for correct biomechanics.



Contoured and molded seat pads provide comfort and ergonomic support for a variety of movements. Marine grade upholstery is tear resistant and available in a variety of color combinations to compliment any gym décor.



The premium precision steal plates incorporate a sound dampening system; additional with options available.



P812 BICEPS CURL

Contoured Cam System

Specially designed cams provide unparalleled ergonomics and smooth resistance for human biomechanics throughout the entire motion; offering a perfect start, strong finish. • Wide stance non-slip foot pads

- Seat bottom adjustment provides for proper positioning
- Dimensions (L/W/H): 47.4 × 41 × 57 in / 1202 × 1042 × 1447 mm
- Stack Weight: 176 lb / 80 kg
- Weight: 378 lb / 171.5 kg
- Max User Weight: 500 lbs / 227 kg



P815 DEPENDENT CHEST PRESS

- Simple seat bottom height adjustment makes for a quick setup
- Dual position, cushioned handles provide biomechanically correct grip positions
- Dimensions (L/W/H): 43.1 × 57 × 57 in / 1095 × 1449 × 1447 mm
- Stack Weight: 176 lb / 80 kg
- Weight: 376 lb / 170.5 kg
- Max User Weight: 500 lbs / 227 kg



P817

DEPENDENT SHOULDER PRESS

- Simple seat bottom height adjustment makes for a quick setup
- Dual position, cushioned handles provide biomechanically correct grip positions
- Dimensions (L/W/H): 53 × 54.4 × 57 in / 1348 × 1381 × 1447 mm
- Stack Weight: 176 lb / 80 kg
- Weight: 548 lb / 248.5 kg
- Max User Weight: 500 lbs / 227 kg



P826

LAT PULL DOWN

- Ergonomically curved bar provides wide or narrow grip options
- Adjustable seat and leg hold down, allow for optimal positioning
- Dimensions (L/W/H): 50.9 × 44.6 × 92.4 in / 1292 × 1134 × 2347 mm
- Stack Weight: 176 lb / 80 kg
- Weight: 344 lb / 156 kg
- Max User Weight: 500 lbs / 227 kg



P821

MID ROW

- Convenient seat height adjustment accommodates various heights
- Chest pad adjust to suit different arm lengths
- Dimensions (L/W/H): 58.1 × 46.3 × 57 in / 1476 × 1175 × 1447 mm
- Stack Weight: 176 lb / 80 kg
- Weight: 367 lb / 166.5 kg
- Max User Weight: 500 lbs / 227 kg



P833

PEC DEC

Contoured Cam System

Specially designed cams provide unparalleled ergonomics throughout the entire motion; offering a perfect start, strong finish, and smooth resistance for human biomechanics.

- Convenient seat height adjustment suits people of various heights
- Ergonomic handle design is comfortable in pec-fly position
- Dimensions (L/W/H): 54.6 × 32.8 × 77 in / 1387 × 835 × 1960 mm
- Stack Weight: 176 lb / 80 kg
- Weight: 368 lb / 167 kg
- Max User Weight: 500 lbs / 227 kg



P831

ABDOMINAL CRUNCH

Contoured Cam System

Specially designed cams provide unparalleled ergonomics throughout the entire motion – meaning a perfect start, perfect finish, and smooth resistance that perfectly suits human biomechanics.

- Adjustable chest cushions help users maintain correct posture and select multiple starting positions
- Dimensions (L/W/H): 42.8 × 43.2 × 57 in / 1087 × 1098 × 1447 mm
- Stack Weight: 176 lb / 80 kg
- Weight: 387 lb / 175.5 kg
- Max User Weight: 500 lbs / 227 kg



P835
ROTARY TORSO

- Preload adjustment allows easy on/off access
- Range limiter makes motion comfortable from start to finish
- Lower body rotates to isolate core and hip motion
- Gas-assisted vertical seat adjustment fits all types of users
- Dimensions (L/W/H): 50.6 × 32.5 × 67.5 in / 1285 × 826 × 1715 mm
- Stack Weight: 176 lb / 80 kg
- Weight: 442 lb / 200.5 kg
- Max User Weight: 500 lbs / 227 kg



P855
GLUTE

- Adjustable chest pad accommodates users of all sizes
- Easy access design allows quick and safe use
- Non-slip foot pad for safety
- Secure, ergonomic handle grips
- Dimensions (L/W/H): 45.6 × 39 × 57 in / 1158 × 990 × 1447 mm
- Stack Weight: 143 lb / 65 kg
- Weight: 315 lb / 143 kg
- Max User Weight: 500 lbs / 227 kg



P858
PRONE LEG CURL

Contoured Cam System

Specially designed cams provide unparalleled ergonomics throughout the entire motion; offering a perfect start, strong finish, and smooth resistance for human biomechanics.

- Range of motion feature allows user to customize start/stop range; perfect for rehabilitation users
- Adjustable leg pad accommodates different leg lengths, allowing
- users to achieve proper leverage
- Dimensions (L/W/H): 54 × 37.9 × 57 in / 1635 × 962 × 1447 mm
- Stack Weight: 176 lb / 80 kg
- Weight: 381 lb / 173 kg
- Max User Weight: 500 lbs / 227 kg



P857
LEG EXTENSION

Contoured Cam System

Specially designed cams provide unparalleled ergonomics throughout the entire motion; offering a perfect start, strong finish, and smooth resistance for human biomechanics.

- Adjustable seat-back cushion keeps posture correct
- Adjustable leg cushion provides optimal comfort for various leg lengths
- Multiple starting positions for full range of motion
- Dimensions (L/W/H): 53.1 × 41 × 57 in / 1350 × 1042 × 1447 mm
- Stack Weight: 176 lb / 80 kg
- Weight: 407 lb / 184.5 kg
- Max User Weight: 500 lbs / 227 kg



P859
LEG CURL

Contoured Cam System

Specially designed cams provide unparalleled ergonomics throughout the entire motion; offering a perfect start, strong finish, and smooth resistance for human biomechanics.

- Adjustable seat-back cushion keeps posture correct
- Adjustable leg cushion provides optimal comfort for various leg lengths
- Multiple starting positions for full range of motion
- Dimensions (L/W/H): 53.1 × 39.3 × 57 in / 1348 × 998 × 1447 mm
- Stack Weight: 176 lb / 80 kg
- Weight: 413 lb / 187.5 kg
- Max User Weight: 500 lbs / 227 kg



P873
CABLE TOWER

- Dual swivel pulleys adjust vertically and lock into place, allowing for functional training from virtually any angle
- 36 incremental adjustments for the ultimate in customization
- Easy grip bars stabilize during balance challenging workouts
- 4:1 (one hand) and 2:1 (two hand) ratios provide versatility for personal and sport-specific training
- Dimensions (L/W/H): 41 x 36.2 x 83.1 in / 1041 x 919 x 2110 mm
- Stack Weight: 176 lb / 80 kg
- Weight: 340 lb / 154 kg
- Max User Weight: 500 lbs / 227 kg



P871
CABLE CROSS OVER

- Dual swivel pulleys adjust vertically and lock into place, allowing for functional training from virtually any angle
- 36 incremental adjustments for the ultimate in customization
- Easy grip bars stabilize during balance challenging workouts
- 4:1 (one hand) and 2:1 (two hand) ratios provide versatility for personal and sport-specific training
- Dimensions (L/W/H): 147 x 36.2 x 87.2 in / 3734 x 919 x 2215 mm
- Stack Weight: 2 x 176 lb / 80 kg
- Weight: 731 lb / 331.5 kg
- Max User Weight: 500 lbs / 227 kg



A93
FUNCTIONAL TRAINER

- Three sets of rotating pulleys deliver maximum training options
- All pulleys are deep-grooved and shrouded to keep cables tracking properly
- Weight stack delivers smooth, silent operation
- Wide variety of accessory handles and carabiners come standard
- Total Motion Technology™ provides three sets of rotational pulleys for a wide variety of exercises
- All components are commercial grade
- Multi-position bench quickly and easily adjusts from flat to multiple incline, to shoulder press positions
- Adjustable lat hold down pads fit a wide variety of users
- Double stitched upholstery
- Bench has transport wheels and EZ Lift handle
- * The bench with a foam roller is included exclusively with the complete set of the functional trainer (A93)

SPECIFICATIONS

Model No.: A93 (A91 - bench, A92 - tower)
 Net Weight: A92: 167 kg | A91: 31.5 kg
 Unit Dimensions (L x W x H): A93: 2550 x 1140 x 2100 mm (100.3 x 44.8 x 82.6 in.)
 A92: 1340 x 1140 x 2100 mm (52.7 x 44.8 x 82.6 in.)
 A91: 1580 x 560 x 1170 mm (62.2 x 22 x 46 in.)
 Box Dimensions (L x W x H): A92: 2140 x 900 x 540 mm (84.2 x 35.4 x 21.2 in.)
 A91: 1600 x 610 x 520 mm (62.9 x 24 x 20.5 in.)
 20' Qty: A92: 25 sets | A91: 48 sets | A93: 16 sets
 40' Qty: A92: 50 sets | A91: 100 sets | A93: 36 sets
 Stack Weight: 70 kg



A91



A92



DF300

**Dual Function
Strength Series**

The SportsArt Dual Function Strength Series is designed specifically to accommodate smaller spaces and budgets without compromising quality, warranty, or comfort. Our Dual Function Strength Series is the only line in this category to feature a DirectDrive™ dual cam system, providing unparalleled ergonomics all the way through the exercise.



The micro cable adjustment feature eliminates the need to remove and retighten cables.



Magnetized weight selector instantly locks into place, providing an easy-to-use and secure operation. The unique fork style delivers more stability than selector pins, while the retracting cord eliminates clutter and keeps the selector within reach. Precision sound dampeners keep the stack motion as quiet as possible.



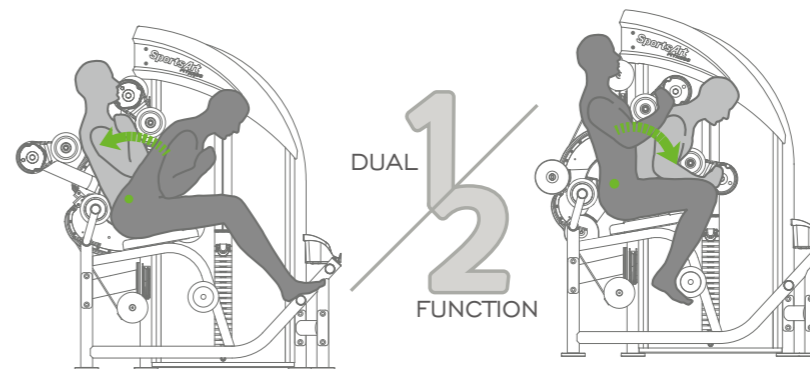
The range of movement adjustment ensures that the cam is synchronized with the user regardless of the starting position, and pivot point markers help the user position themselves properly for correct biomechanics.



Contoured and molded seat pads provide comfort and ergonomic support for a variety of movements and the Marine grade upholstery is tear resistant.

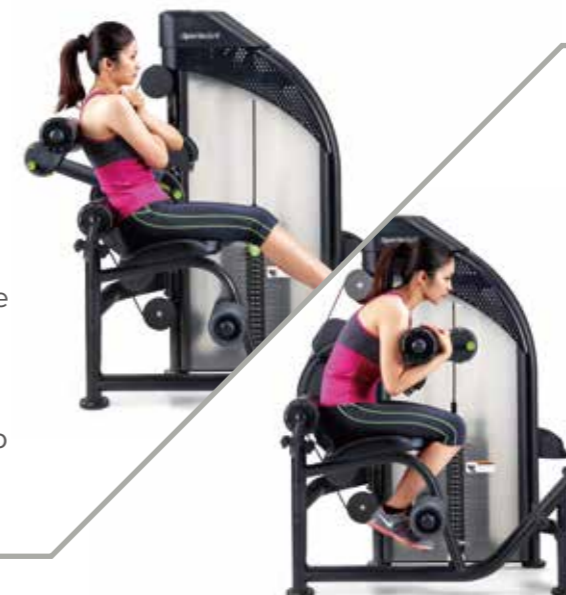


PRODUCT FEATURES



The SportsArt Dual Function Strength Series is designed specifically to accommodate smaller spaces and budgets without compromising quality, warranty or comfort. Our Dual Function Strength Series is the only series in this category to feature DirectDrive™ dual cam system, providing unparalleled ergonomics all the way through the exercise.

The DF-206 is designed to offer a Lower Back or torso workout. During the lower back workout, our Contoured Cam System allows users to adjust their workout positions to optimise the entire motion.



To perform the torso workout, the user simply adapts their seating position and using the Contoured Cam System, adjusts the machine for an optimum workout.

DF300

LEG EXTENSION / LEG CURL

Contoured Cam System Specially designed cams provide unparalleled ergonomics throughout the entire motion; offering a perfect start, strong finish, and smooth resistance for human biomechanics.

DirectDrive™ System

Having two contoured cams to complete two exercises, eliminates

- Spring-lock release knobs make for easy, intuitive change over between leg extension and leg curl exercise
- Adjustable seat-back cushion keeps posture correct
- Adjustable cylindrical cushion provides ankle support
- Multiple seating positions give full range of motion for optimal benefits for various user size
- Dimensions (L/W/H): 53.1 × 39.8 × 57 in / 1348 × 1010 × 1447 mm
- Stack Weight: 220 lb / 100 kg
- Weight: 492 lb / 223 kg
- Max User Weight: 500 lbs / 227 kg





DF301
LEG PRESS / CALF EXTENSION

- Seat-back proximity adjustment lever is conveniently located on the right side, near handlebar
- Step-through design allows for easy entrance/exit
- Handles at side and top provide secure entrance/exit to machine
- Non-slip foot plate surface provides maximum security
- Multiple seating positions give full range of motion
- 2:1 weight ratio means resistance feels twice as heavy as actual physical weight, keeping product weight to a minimum
- Dimensions (L/W/H): 92.6 × 43.7 × 67.2 in / 2351 × 1111 × 1707 mm
- Stack Weight: 220 lb / 100 kg , 1:2 ratio equals 440 lb / 200 kg
- Weight: 531 lb / 241 kg
- Max User Weight: 500 lbs / 227 kg



DF303
LAT PULL DOWN / MID ROW + CHEST PRESS

- Adjustable seat, chest, and back cushions maintain correct posture
- Smooth motion allows for controlled muscle alignment
- Dimensions (L/W/H): 60.4 × 44.6 × 89.1 in / 1533 × 1134 × 2263 mm
- Stack Weight: 220 lb / 100 kg
- Weight: 487 lb / 221 kg
- Max User Weight: 500 lbs / 227 kg



DF302
ABDUCTOR / ADDUCTOR

DirectDrive™ System

Having two contoured cams to complete two exercises, eliminates the take-off slop found on other Dual Function models.

- Intuitive operation and easy changeover between exercise
- Multiple seating positions give full range of motion
- 2:1 weight ratio means resistance feels twice as heavy as actual physical weight, keeping product weight to a minimum
- Dimensions (L/W/H): 41.5 × 59.6 × 57 in / 1055 × 1513 × 1447 mm
- Stack Weight: 143 lb / 65 kg
- Weight: 391 lb / 177.5 kg
- Max User Weight: 500 lbs / 227 kg



DF304
PEC FLY / REAR DELTOID

Contoured Cam System

Specially designed cams provide unparalleled ergonomics throughout the entire motion; offering a perfect start, strong finish, and smooth resistance for human biomechanics.

- Convenient seat height adjustment suits people of various heights
- Ergonomic handle design is comfortable in both pec fly and rear deltoid positions
- Dimensions (L/W/H): 51.2 × 30.6 × 76 in / 1300 × 776 × 1930 mm
- Stack Weight: 220 lb / 100 kg
- Weight: 409 lb / 185.5 kg
- Max User Weight: 500 lbs / 227 kg



DF305

BICEP / TRICEP

Contoured Cam System

Specially designed cams provide unparalleled ergonomics throughout the entire motion; offering a perfect start, strong finish, and smooth resistance for human biomechanics.

DirectDrive™ System

Having two contoured cams to complete two exercises, eliminates the take-off slop found on other Dual Function models.

- Spring-lock release knobs make for easy changeover
- Seat bottom and back are adjustable, providing proper biomechanical positioning
- Multiple seating positions give full range of motion for optimal benefits
- Dimensions (L/W/H): 54.5 × 41.6 × 57 in / 1383 × 1057 × 1447 mm
- Stack Weight: 220 lb / 100 kg
- Weight: 482 lb / 218.5 kg
- Max User Weight: 500 lbs / 227 kg



DF307

CHIN AND DIP

- Biomechanically correct action and simple changeover adjustments make this product easy and comfortable to use
- Steps assist users of various sizes and abilities
- Quick-release platform knob makes changeover easy
- Dimensions (L/W/H): 49.8 × 41.4 × 76 in / 1264 × 1052 × 1930 mm
- Stack Weight: 220 lb / 100 kg
- Weight: 475 lb / 215.5 kg
- Max User Weight: 500 lbs / 227 kg



DF306

LOWER BACK / ABDOMINAL CRUNCH

Contoured Cam System

Specially designed cams provide unparalleled ergonomics throughout the entire motion; offering a perfect start, strong finish, and smooth resistance for human biomechanics.

DirectDrive™ System

Having two contoured cams to complete two exercises, eliminates the take-off slop found on other Dual Function models.

- Spring-lock release knobs make for easy, intuitive changeover between back extension and ab crunch exercises
- Chest/back pads adjust for different size users
- Foot pegs and cushions help users maintain correct posture
- Multiple seating positions give full range of motion for optimal benefits or various user size
- Dimensions (L/W/H): 44.6 × 42.8 × 57 in / 1133 × 1087 × 1447 mm
- Stack Weight: 220 lb / 100 kg
- Weight: 470 lb / 213.3 kg
- Max User Weight: 500 lbs / 227 kg



DF308

MULTI PRESS

- Simple seat-bottom height adjustment makes for a quick setup
- Press arm adjusts easily via a pull-pin knob
- Dual-position cushioned handles provide biomechanically correct grip positions
- Multiple seating positions give full range of motion for optimal benefits for various user size
- Convenient foot lever bench position adjustment
- Allows for multiple bench press positions
- Dimensions (L/W/H): 62.7 × 56.6 × 65.1 in / 1590 × 1438 × 1654 mm
- Stack Weight: 220 lb / 100 kg
- Weight: 498 lb / 226 kg
- Max User Weight: 500 lbs / 227 kg

COLOR CUSTOMIZATION

The Selectorized Strength line comes standard with matte black(PANTONE 433C) side panels but each product can be tailored to fit your facility's color needs with the following color options.

**Speak to your sales representative for cost and lead time information.*



BLUE PANTONE 287C



YELLOW PANTONE 123C



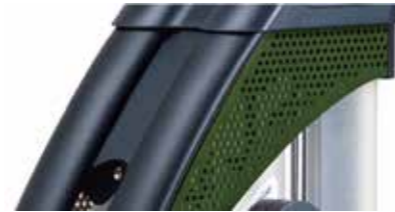
RED PANTONE 185C



SILVER PANTONE 877C



BRONZE PANTONE 4715C

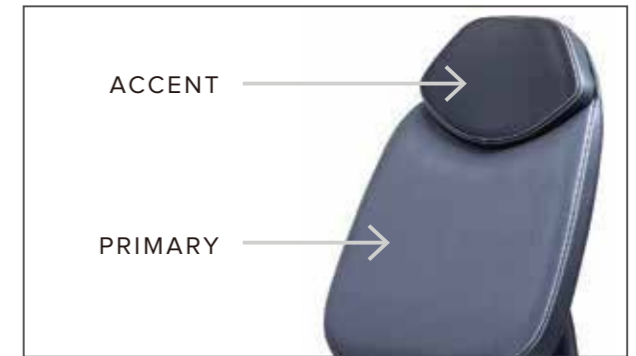


GREEN PANTONE 574C



UPHOLSTERY COLORS

Our tear-resistant, marine grade upholstery comes standard in our stylish Smokey Gray with Black accent. In addition, there are multiple color options available to customize our product to best suit your needs.



Smokey Gray #2 & Black #3 (standard combo)

PRIMARY COLORS

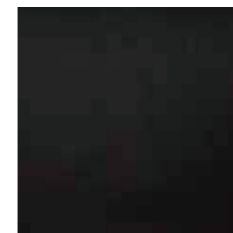


Sterling Gray #1



Smokey Gray #2 (standard)

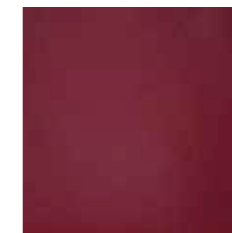
ACCENT COLORS



Black (standard) #3



Flame Orange #4



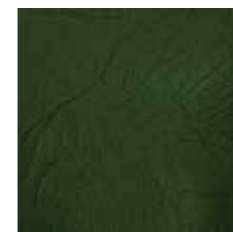
Maroon Red #5



Aqua Green #6



Sea Blue #7



Forest Green #14



Burnt Orange #15



Royal Blue #20



Plum Red #43



Shamrock Green #45